

Container Safety / Weighing System



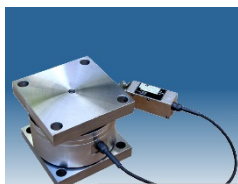
Measuring the load of each Single-, Twin-and Tandem-lift.

- Weighing and safety solution for 20ft/40ft ISO-containers
- According to the IMO regulations (accuracy +/-5%)
- Connection to TOS system (CANopen or Ethernet)
- Measuring of total weight and balanced weight (COG)
- Datalogging

- Visualisation of container weights and dynamics
- Usage in harsh environments
- Easy calibration, no laptop required
- Interfaces CANopen and Ethernet



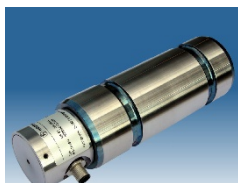
fSENS Pressure sensor



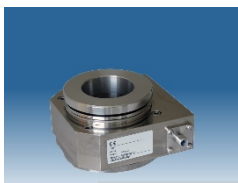
fSENS Pressure sensor



fSENS KMD



fSENS Loadpin



fSENS Ringsensor



Various solutions for:

- STS Cranes
- RTG
- RMG
- Reachstacker
- etc